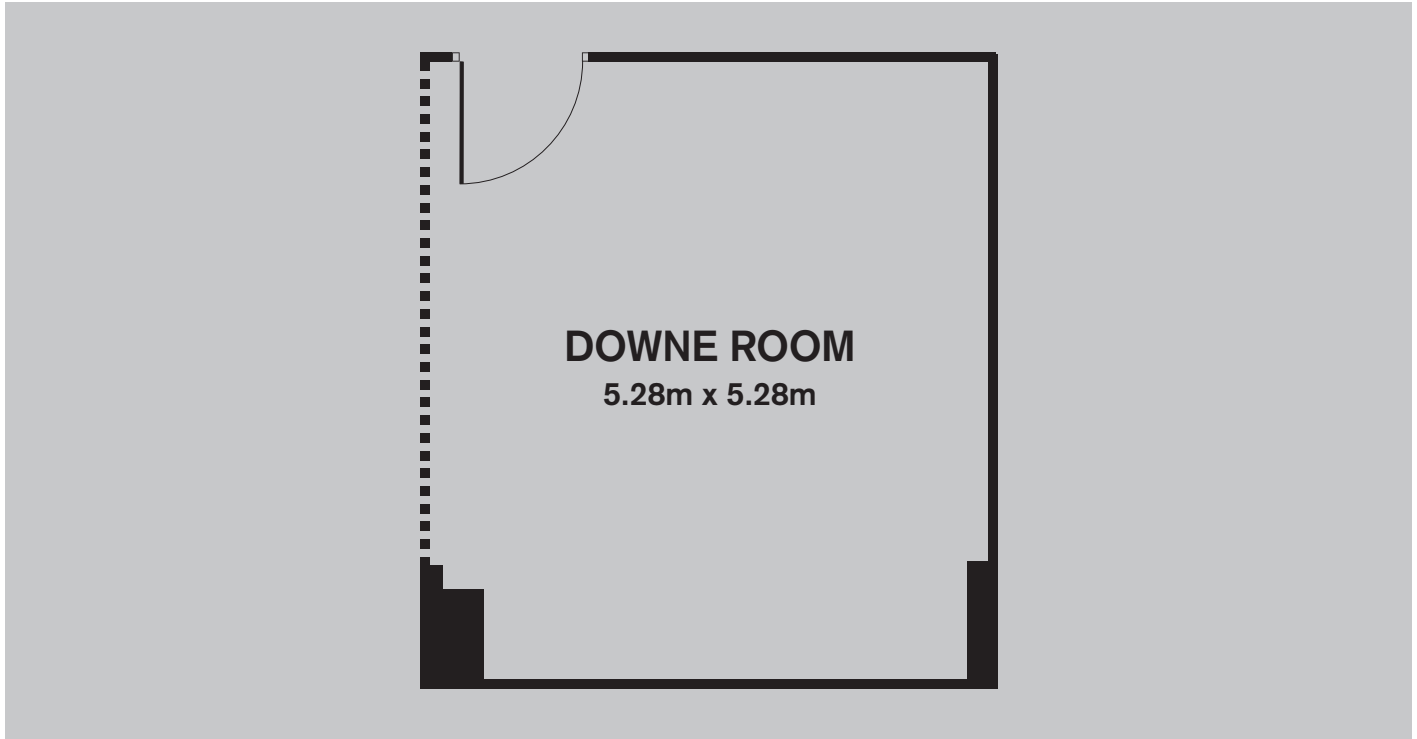









# Downe Room

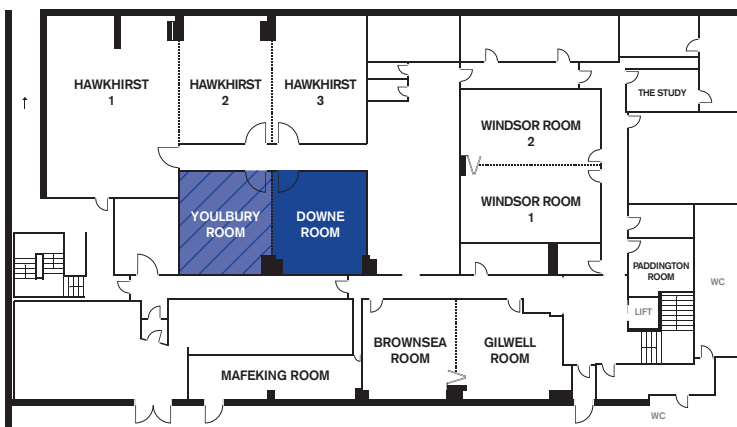
## FLOOR PLAN



## CAPACITY

						
BOARDROOM 10	OPEN BOARDROOM N/A	CABARET/ DINNER N/A	CLASSROOM 10	THEATRE 20	U-SHAPE 10	EXAM 10

## LOWER GROUND FLOOR



EXPANDABLE

## The Youlbury Downe Suite 10.54m x 5.28m

Download extra floorplan for suite option or contact us directly for any further requests.